

ROYAL NATAL YACHT CLUB IN-PORT RACE

VASCO da GAMA OCEAN RACE 2024 DIGNITARY RACE
SATURDAY, 18th MAY 2024 – IN PORT

NOTICE OF RACE And SAILING INSTRUCTIONS

1. RULES

- 1.1 The race will be governed by the World Sailing Rules as defined in the Racing Rules of Sailing (RRS) 2021-2024.
- 1.2 Participating boats shall conform to the Equipment Rules of Sailing (ERS) 2021-2024, the relevant Class Rules, and these Sailing Instructions.
- 1.3 RRS 44.1 is changed so that all reference to “two turns” is replaced by “one turn”.
- 1.4 The rating systems shall be used as specified in the Vasco da Gama Ocean Race 2024 NOR for the Vasco da Gama Ocean Race entries and the ORC or PHRF rating as determined by the rating committee for all other participants.

2. ENTRIES

Racing is open to all yachts entered in the Daisy Business Solutions Vasco da Gama Ocean Race 2024 and any other interested yachts.

3. ENTRY FEE

There is no entry fee.

4. DIVISIONS

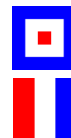
- 4.1 Entrants in the Vasco da Gama Ocean Race will be divided into divisions in accordance with the Daisy Business Solutions Vasco da Gama Ocean Race 2024 NOR.
- 4.2 Non Vasco da Gama entrant yachts will sail in separate division(s) depending on numbers.

5. STARTS


- 5.1 1st Start: VASCO ENTRANTS
- 5.2 2nd Start: NON VASCO ENTRANTS
- 5.3 The warning signal for the 1st start will be made not before 13h55 on Saturday 18 May 2024. The starting signal for the 1st start will be the warning signal for the next start.

6. CLASS FLAGS

- 6.1 First Start : VASCO ENTRANTS FLAG W
- 6.2 Second Start : ALL OTHER CLASSES FLAG T



7. STARTING PROCEDURE

- 7.1. Races will be started in accordance with RRS 26 (5-minute sequence) save for that referenced below.
First Warning Signal not before 13:55
- 7.2. There will be no General Recall. Any yacht deemed over the start line before the starting signal and not returning to restart correctly will be scored OCS. The Race Officer will signal this by a second sound signal after the starting sound signal as well as raising the X flag . The X flag will be lowered once all yachts OCS at the time of the starting signal have returned, or one minute before the start of the next division. The Race Officer will attempt to communicate this to the offending yachts by hailing or radio but this is not mandatory.

8. COURSES

- 8.1. The course to be sailed will be indicated by the following pennants – Refer to course diagrams in APPENDIX A:



8.1.1. North Easterly (**Round all marks to Starboard**) 2-Laps

Start between bridge boat and the red round mark, then proceed to M1, M2, M3, M1, M2, M3 and **finish between the bridge boat and the red round mark.**



8.1.2. South Westerly (**Round all marks to Port**) 2-Laps

Start between bridge boat and the red round mark, then proceed to M1, M2, M3, M1, M2, M3 and **finish between the bridge boat and the red round mark.**



8.1.3. Southerly / South Easterly (**Round all marks to Starboard**) 2-Laps

Start between bridge boat and the red round mark, then proceed to M1, M2, M3, M1, M2 and **finish between the bridge boat and the yellow cylindrical mark.**

- 8.2. Harbour marks S1 and E2 are marks of the course required to be passed to the deep-water side of the harbour marks/ buoys.
- 8.3. The diagrammed positions of the marks are approximate and may be adjusted to suit the prevailing conditions on the day.
- 8.4. The following harbour buoys are marks of the course and are to be passed on the deep-water side on all courses: E1, E2, E3, S1, and D1 (East Cardinal).

9. SHORTENED COURSE

Should a race be shortened, the “**S**” Flag and (when relevant) a class flag will be flown with two sound signals. The leading yacht in that class will then round the buoy at which the signal is made and proceed directly to the finish line. All other yachts in that division(s) will follow suite.

10. MARKS

- 10.1. All turning marks will be red cylindrical marks.
- 10.2. The Start mark and Finish mark will be a red round buoy.

11. SCORING

This race be scored according to RRS Appendix A.

12. SAFETY AND INSURANCE

Each participating yacht shall carry sufficient valid third-party liability insurance to cover any liability from their participation in this event.

Each skipper is reminded of Section 4 of the 2021-2024 RRS which states that ***the responsibility for a yacht's decision to participate in a race or to continue racing is hers alone.***

Each skipper is reminded that they are sailing in a busy commercial harbour. At all times they shall stay clear of working vessels. All skippers must also be fully conversant and comply with all harbour rules as published by the Port Authority.

By entering and participating in this regatta/race each skipper and crew acknowledges and understands the risk involved and thereby indemnifies and warrants no liability on the host club, its staff, support personnel, office bearers or members of any claims because of their participation in this regatta/race.

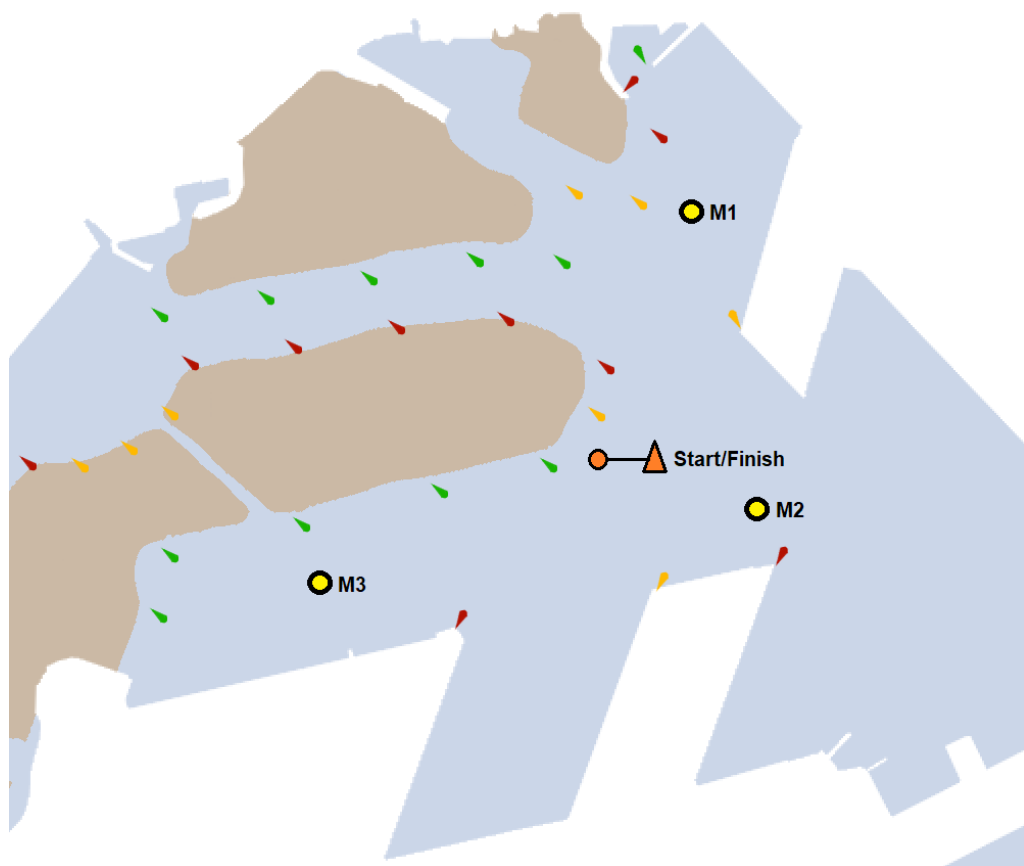
APPENDIX A – COURSES

Course 1 – North Easterly



Notes:

1. All turning marks are to be left to starboard.
2. Harbour buoys are marks of the course and must be passed on the deep-water side.
3. The final positions of marks may vary from the diagram.
4. Course: Start, M1, M2, M3, M1, M2, M3, Finish

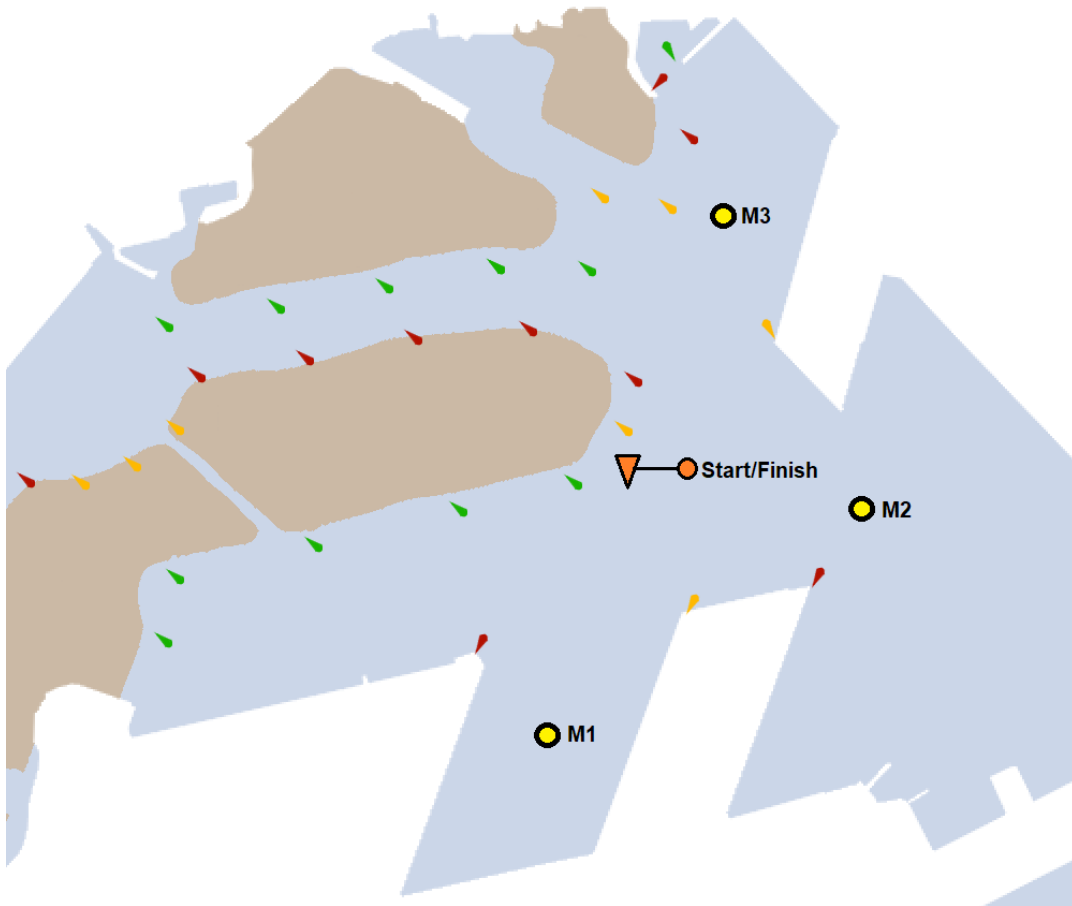


Course 2 – South Westerly



Notes:

1. All **turning marks are to be left to port.**
2. Harbour buoys are marks of the course and must be passed on the deep-water side.
3. The final positions of marks may vary from the diagram.
4. Course: Start, M1, M2, M3, M1, M2, M3, Finish



Course 3 – Southerly/South Easterly



Notes:

1. All turning marks are to be left to starboard.
2. Harbour buoys are marks of the course and must be passed on the deep-water side.
3. The final positions of marks may vary from the diagram.
4. COURSE: Start, M1, M2, M3, M1, M2, Finish

